



SAMPSON COUNTY 911 & ES FACILITIES

CLINTON,
NORTH CAROLINA

CONSTRUCTION
DOCUMENTS

AREA 2 POWER
PLAN

DATE	12.04.2020	
PROJECT NO	20003	
REVISIONS		
NUM.	DATE	DESCRIPTION:
1	12-17-2020	REVISION #1

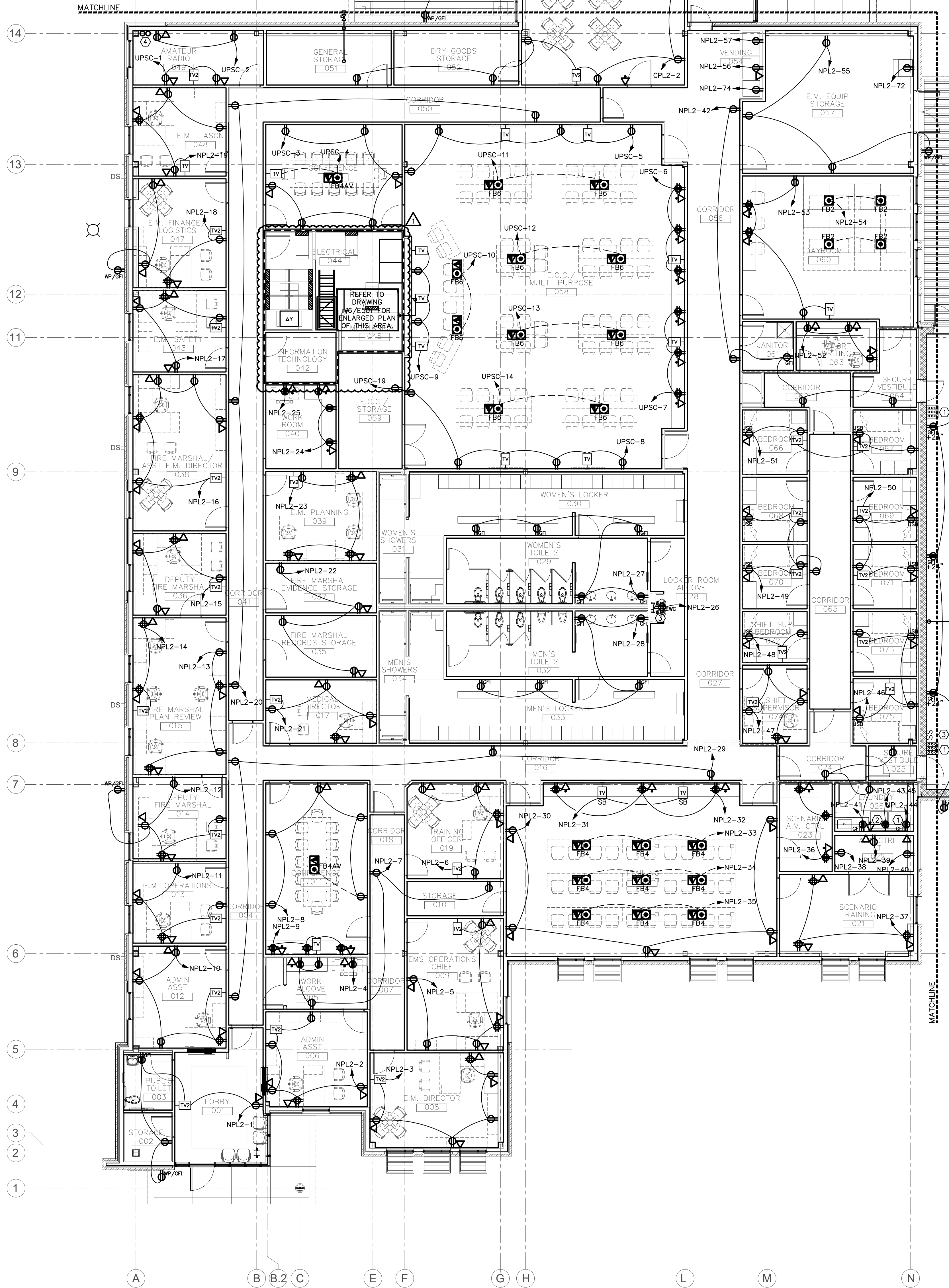
THIS DRAWING IS THE PROPERTY OF ADW ARCHITECTS, P.A., AND
SHALL NOT BE REPRODUCED OR COPIED IN WHOLE OR IN PART. IT
SHALL NOT BE USED ON ANY OTHER PROJECT OR GIVEN TO ANY
OTHER COMPANY OR AGENCY WITHOUT THE CONSENT OF ADW
ARCHITECTS, P.A.



SEAL

E202

SHEET NUMBER



GENERAL NOTES

(APPLY TO THIS SHEET ONLY)

- MC CABLE SHALL NOT BE USED.
- CONTRACTOR SHALL COORDINATE ALL FLOOR BOX LOCATIONS AND REQUIREMENTS WITH FURNITURE VENDORS PRIOR TO ROUGH-IN.
- CONTRACTOR SHALL COORDINATE ALL TV LOCATIONS, MOUNTING HEIGHTS, AND REQUIREMENTS WITH OWNER PRIOR TO ROUGH-IN.
- ALL PENETRATIONS THROUGH CONSTRUCTION BOUNDARIES OF ROOMS PROTECTED BY CLEAN AGENT FIRE SUPPRESSION SYSTEMS SHALL BE SEALED GAS-TIGHT BY THE CONTRACTOR RESPONSIBLE FOR THE PENETRATIONS PRIOR TO FIRE SUPPRESSION SYSTEM ACCEPTANCE TEST. COORDINATE WITH ALL AFFECTED TRADES. IF THE SYSTEM DOES NOT PASS THE TEST, RESEAL PENETRATIONS AND RETEST UNTIL SYSTEM PASSES. CONTRACTOR(S) RESPONSIBLE FOR LEAKING PENETRATION(S) SHALL BEAR ANY COSTS ASSOCIATED WITH RETESTING THE FIRE SUPPRESSION SYSTEM.

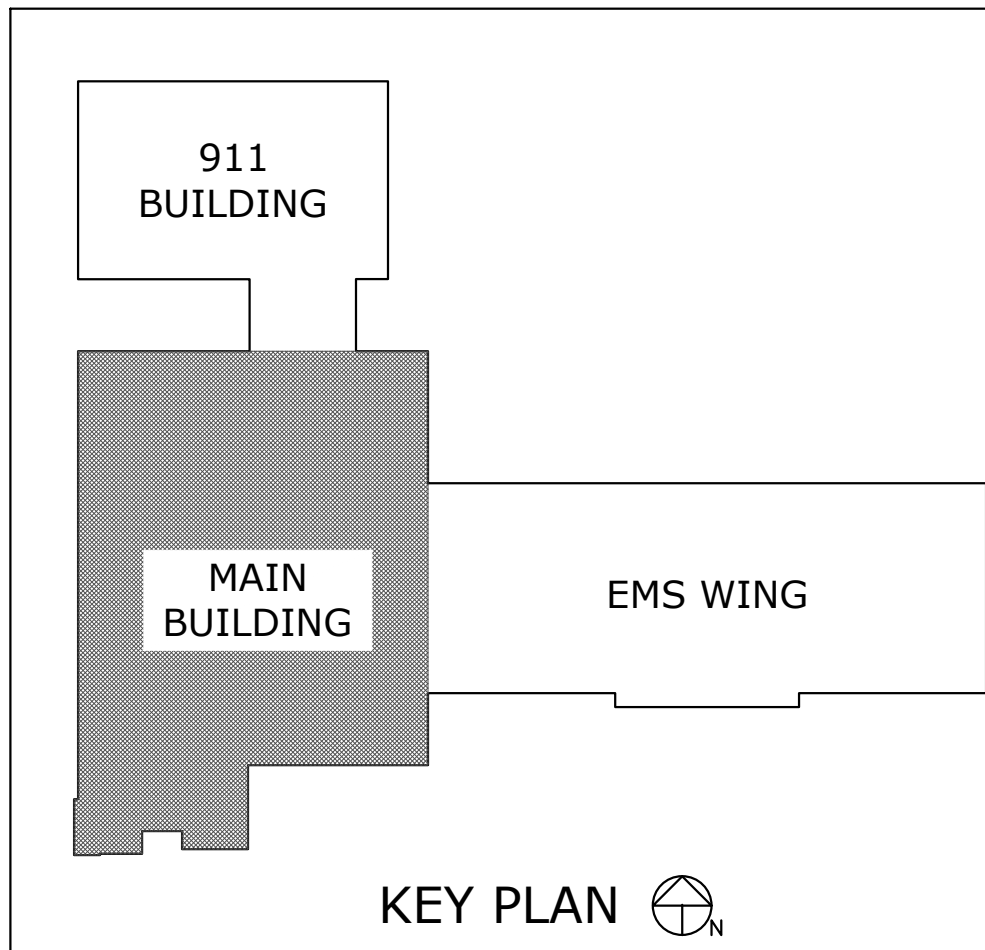
1 AREA 2 FLOOR PLAN - POWER

1/8" = 1'-0"

KEYED NOTES

(APPLY TO THIS SHEET ONLY)

- PROVIDE 120V GFCI RECEPTACLE FOR WASHER. COORDINATE MOUNTING HEIGHT REQUIREMENTS WITH ARCHITECT.
- PROVIDE DRYER RECEPTACLE WITH MATCHING CORD/PLUG. COORDINATE WITH ARCHITECT/OWNER FOR TYPE REQUIRED.
- PROVIDE RECEPTACLES FOR CONNECTION TO ELECTRIC WATER COOLERS AND BOTTLE FILLER. BREAKER SHALL BE GFCI PROTECTED. COORDINATE MOUNTING REQUIREMENTS AND HEIGHTS WITH PLUMBING CONTRACTOR PRIOR TO ROUGH-IN.
- ANTENNA CONDUIT STUB UP LOCATION. SEE SHEET E010 FOR ADDITIONAL INFORMATION.



KEY PLAN